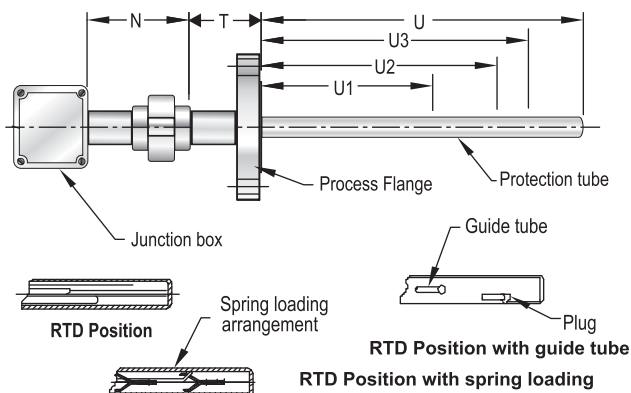



Specifications
Standard Version

No of Elements	: Simplex
Element Type	: Pt -100
Range	: -70 till 500°C
Accuracy	: Class 'B' Tolerance as per IEC - 751 / DIN 43760
No of Points	: 3 RTD
Wire configuration	: 3 Wire system
Sheath diameter	: 3.0 mm
Sheath material	: SS 316
Junction box type	: Weatherproof, IP 65 in Die cast aluminum
No of conduit entries	: Three
Conduit entry size	: 3/4" ET(F)
Junction box extension type	: Junction box with nipple Union of CS
Protecting tube material	: SS 316
Protecting tube size	: 1/2" Sch. 40
Flange material	: SS 316
Flange type / size	: 1 1/2" 150# RF
Immersion length	: U = 1500 mm
TC point location (mm)	: Example :U1 = 500, U2 = 750, U3 = 1350
Extension length "T"	: 150 mm
Junction box extension length "N"	: 200 mm, CS plated
Tag plate	: SS Tag plate

Dimensional Details


Notes : • Drawings are not to scale. • All Dimensions are in mm.

Special Features

- Mineral insulated cable.
- Available in various connections & sheath diameters
- Enclosures (Head)
 - Weatherproof IP - 67
 - Flameproof Gr. IIA, IIB
 - Explosion proof IIA, IIB, II C
- Transmitter output 4 - 20 mA (Optional)
- Reference Standard : IEC - 751 / DIN 43760

Application

- These assemblies find application in Refinery & Petrochemical plants which includes catalytic crackers, lime kilns, distillation columns & pressurized reactor vessels.

How To Order
Example
Basic Model
Optional Extras
No of Element

1 Simplex (Standard)	2 Duplex
-----------------------------	-----------------

Element Type

P1 Pt - 100 (Standard)	P3 Pt - 1000
P2 Pt - 500	

Range

C -70 till 500°C

Accuracy

A Class 'A' -70 till 300°C	For any range beyond this, consult factory.
B Class 'B' (Standard)	

No of Point

2 2 RTD	5 5 RTD
3 3 RTD (Standard)	6 6 RTD
4 4 RTD	9 9 RTD

Other, please specify

Wire Configuration

2 2 Wire system	3 3 Wire system (Standard)
4 4 Wire system	

Sheath Diameter

03 3.0 mm	06 6.0 mm (Standard)
05 4.5 mm	08 8.0 mm

Sheath Material

1 SS 316 (Standard)
2 SS 316L

Junction Box Type

W Weatherproof IP-67 Junction Box in Die Cast Aluminum	
F Flameproof IP-67 Gr. IIA IIB Junction Box in Die Cast Aluminum	X
E Explosion proof IP-67 Gr. IIC Junction Box in Die Cast Aluminum	OR
	XX

* For other options, contact factory.

No of Conduit Entry / Entries

1 One	3 Three (Standard)
2 Two	5 Five

Conduit Entry Size

A 3/4" ET(F)	B 1/2" NPT(F)
C 3/4" NPT(F)	

How To Order				Example
Guide Tube Diameter				XX
06	6.0 mm			
08	8.5 mm			
10	10.0 mm			
XX	Not applicable			
Guide Tube Material				X
1	SS 316			
X	Not applicable			
Head Extension Type				X
X	Head only			
E	Head with nipple extension			
U	Head with nipple union extension			
N	Head with nipple union nipple extension			
Junction Box Extension Type				X
U	With Nipple & Union			
H	With Flexhose			
Protecting Tube				XX
	Size	OD in mm	Wall Thk. in mm	
N4	1/2"Sch.40	21.3	2.77	
N8	1/2"Sch.80	21.3	3.74	
R4	1"Sch.40	33.4	3.4	
R8	1"Sch.80	33.4	4.5	
T4	1.5"Sch.40	48.3	3.7	
T8	1.5"Sch.80	48.3	5.1	
U4	2"Sch.40	60.3	3.9	
U8	2"Sch.80	60.3	5.5	
Other, Please Specify				
Protecting Tube Material				X
2	ASTM A105 (CS)			
3	A182 F316			
Consult factory for other material.				
Flange Material				X
2	ASTM A105 (CS)			
3	A182 F316			
Consult factory for other material.				
Flange Type / Size				XXX
(As per ANSI B 16.5)*				
B09	1/2" 150 #	B21	1" 150 #	
B10	1/2" 300 #	B22	1" 300 #	
B11	1/2" 600 #	B23	1" 600 #	
B15	3/4" 150 #	B33	1 1/2" 150 #	
B16	3/4" 300 #	B34	1 1/2" 300 #	
B17	3/4" 600 #	B35	1 1/2" 600 #	
(* Please mention the flange face and flange finish) Please consult factory for other flanges.				

How To Order		Example
Multipoint Insetrtion Length		U1=500 mm
U1, U2, U3, U4....Specify in mm.		U2=750 mm
Immersion Length		U3=1350 mm
U - Specify in mm		1500 mm
Extension Length		150 mm
T - Specify in mm.		
Junction Box Extension Length		200 mm
N - Specify in mm.		
Other Options		XX
21	Plug for conduit entry in Carbon Steel	
22	Plug for conduit entry in SS 304	
23	Plug for conduit entry in SS 316	
32	S. C. cable gland in Nickel plated Brass - WP	
33	D. C. cable gland in Nickel plated Brass - WP	
35	D. C. cable gland in SS 304 - WP	
37	D. C. cable gland in SS 316 - WP	
39	D. C. cable gland in Nickel plated Brass - FLP	
41	D. C. cable gland in SS 304 - FLP	
43	D. C. cable gland in SS 316 - FLP	
44	Plug for conduit entry in AL	
45	D. C. cable gland in Nickel plated brass-Ex proof	
46	D. C. cable gland in SS304--Ex proof	
47	D. C. cable gland in SS316--Ex proof	
48	FLP / Ex proof plug in SS 304	
49	FLP / Ex proof plug in SS 316	
UC	Head with nipple union extension 100 mm in CS	
U4	Head with nipple union extension 100 mm in SS 304	
U6	Head with nipple union extension 100 mm in SS 316	
NC	Head with nipple union nipple extension 100 mm in CS	
N4	Head with nipple union nipple extension 100 mm in SS 304	
N6	Head with nipple union nipple extension 100 mm in SS 316	
PW	Calibration certificate	
Note :		
1. When selecting option "PW", please also specify temp. Points at which calibration is to be carried out .		
2. Explanations of Abbreviations used: SC = Single Compression SS = Stainless Steel DC = Double Compression FLP = Flameproof WP = Weatherproof		
3. Head mounted temperature transmitter can be provided.		
Ordering Example :		
R05 . X . XX . X . X . X . X . X . X . X OR XX . X . X . XX . X . X . X . XX . X . X . XXX . U1=500mm/U2=750mm/U3=1350mm . 1500mm . 1500mm . 200mm . XX		
Note : Specifications and dimensions given in this product catalogue represents the state of engineering at the time of printing . Modifications may take place and materials specified may be replaced by others without prior notice.		